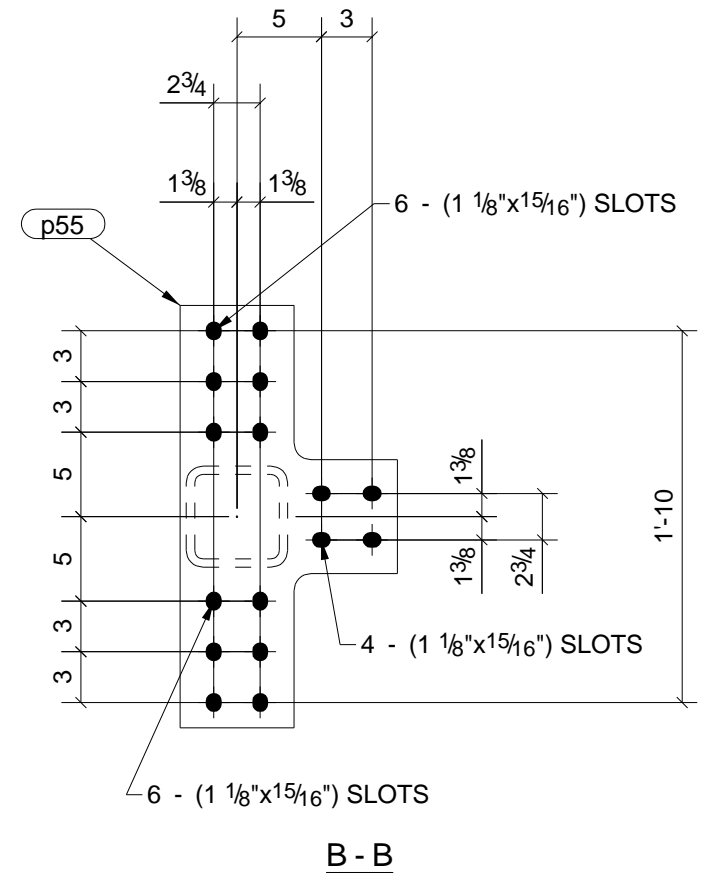
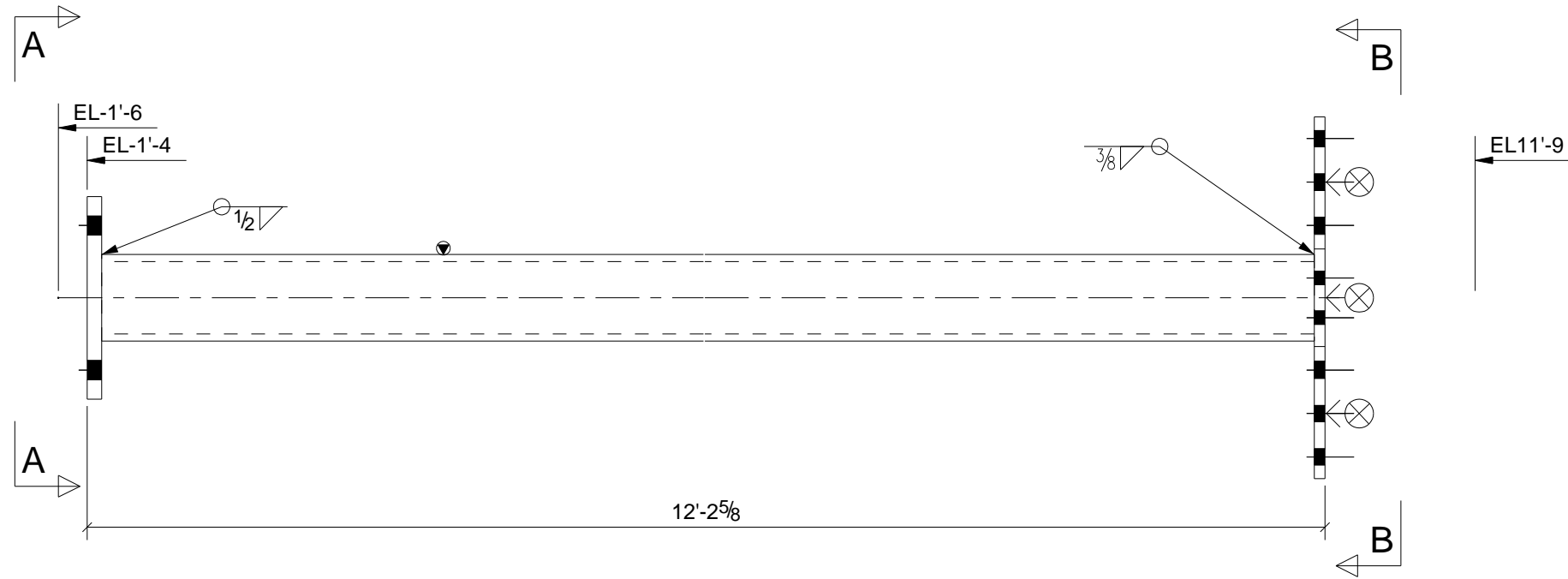
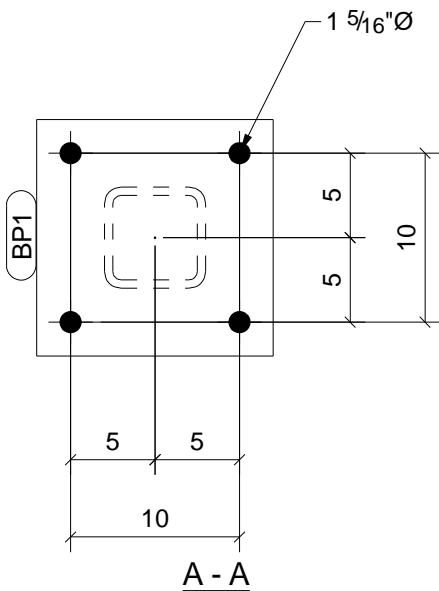
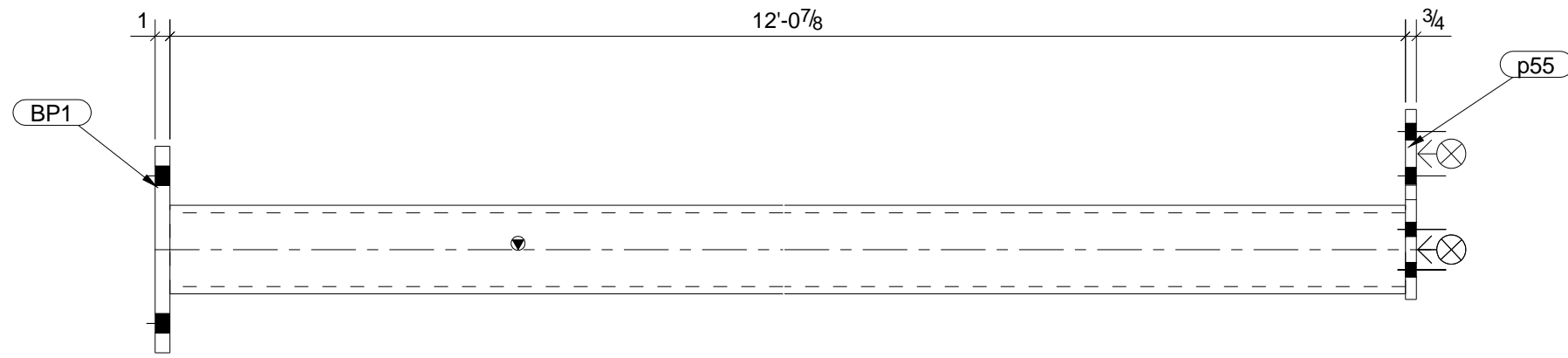


GRID LOCATION	BOTTOM ELEVATION
2/F	-1'-4"



ONE - COLUMN - CT11



BILL OF MATERIAL

3" NO PAINT AROUND ALL OF THE HOLES

05/19/2015	1	Quantity now one; CT21 Base Plate Moved	DB
05/04/2015	0	For Fabrication	DB
03/06/2015	A	For Approval	DB
DATE	NO.	DESCRIPTION	BY

S.T. METAL WORKS, INC.
MARIETTA, GA
770-499-7386 FAX 770-428-7462 www.stmetalworks.co

DESCRIPTION	DATE	JOB No.
COLUMN DETAILS	03/31/2014	
DRAWN BY	CHK'D BY	DRG No.
DB	DB	CT11

Qty Ea.	Qty Tot	Piece Mark	Description	Length	Weight Total	Remarks	Adv Mill #	Steel Grade
	1	CT11	COLUMN					
1	1		HSS6X6X1/2	12'-0 7/8"	400	SQ-2		A500-GR.B
1	1	BP1	PL1"X14"	1'-2"	56			A572-GR.50
1	1	p55	PL3/4"X12 7/8"	2'-1"	45			A36
16			7/8"Ø A490SC_DTI BOLT	2 3/4"		Site		

STEEL ASTM	A992	UNO	PROJECT NAME	PNC Bank - Buckhead
ELECTRODES	E70xx	UNO	LOCATION	Atlanta, GA
WELDS	1/4" FILLET MIN.	UNO	CONTRACTOR	Structor Group, Inc.
OPEN HOLES	13/16"	UNO	ARCHITECT	Gensler
BOLTS	A325N	UNO		
PAINT	1 COAT SHOP PRIMER	UNO		